



BTK 1008





RADIUS LIFT ARM

*BTK 508 RADIUS LIFT ARM BATCHING PLANT
TWO RADIUS LIFT ARM, ONE OR TWO CEMENT
WEIGHING SYSTEMS, 500 L. CLS PER CYCLE*

BTK 1008



- COMPACT AND VERSATILE
- MAXIMUM CONCRETE QUALITY
- IDEAL FOR SMALL AND MEDIUM CONSTRUCTION SITES EVEN IN URBAN CENTERS
- LESS CO₂, TRAFFIC AND EMISSIONS
- SINGLE OPERATOR

BTK 1008

BTK radius lift arm batching plant are compact, versatile and with low environmental impact, they are suitable for small and medium-sized construction sites, even located in urban center where emissions, truck handling and energy consumption must be reduced to a minimum level. Only one operator is needed to manage it.



DISTINCTIVE FEATURES

- ELECTRONIC WEIGHING SYSTEM FOR CERTIFIED CONCRETE
- COMPLETELY HYDRAULIC OPERATION
- AUTOMATIC TRANSLATING BUCKET HOLDER BASKET
- SELF-COMPENSATION OF WATER
- MANAGEMENT UNIT WITH THE POSSIBILITY OF DATA TRANSMISSION AND REMOTE ASSISTANCE
- GREAT AUTONOMY THANKS TO THE GREAT STORAGE ON THE GROUND; BETTER MANAGEMENT OF SUPPLY
- MAXIMUM FLEXIBILITY: PRODUCT WHEN AND HOW MUCH YOU WANT. ZERO WASTE!



TECHNICAL CHARACTERISTICS

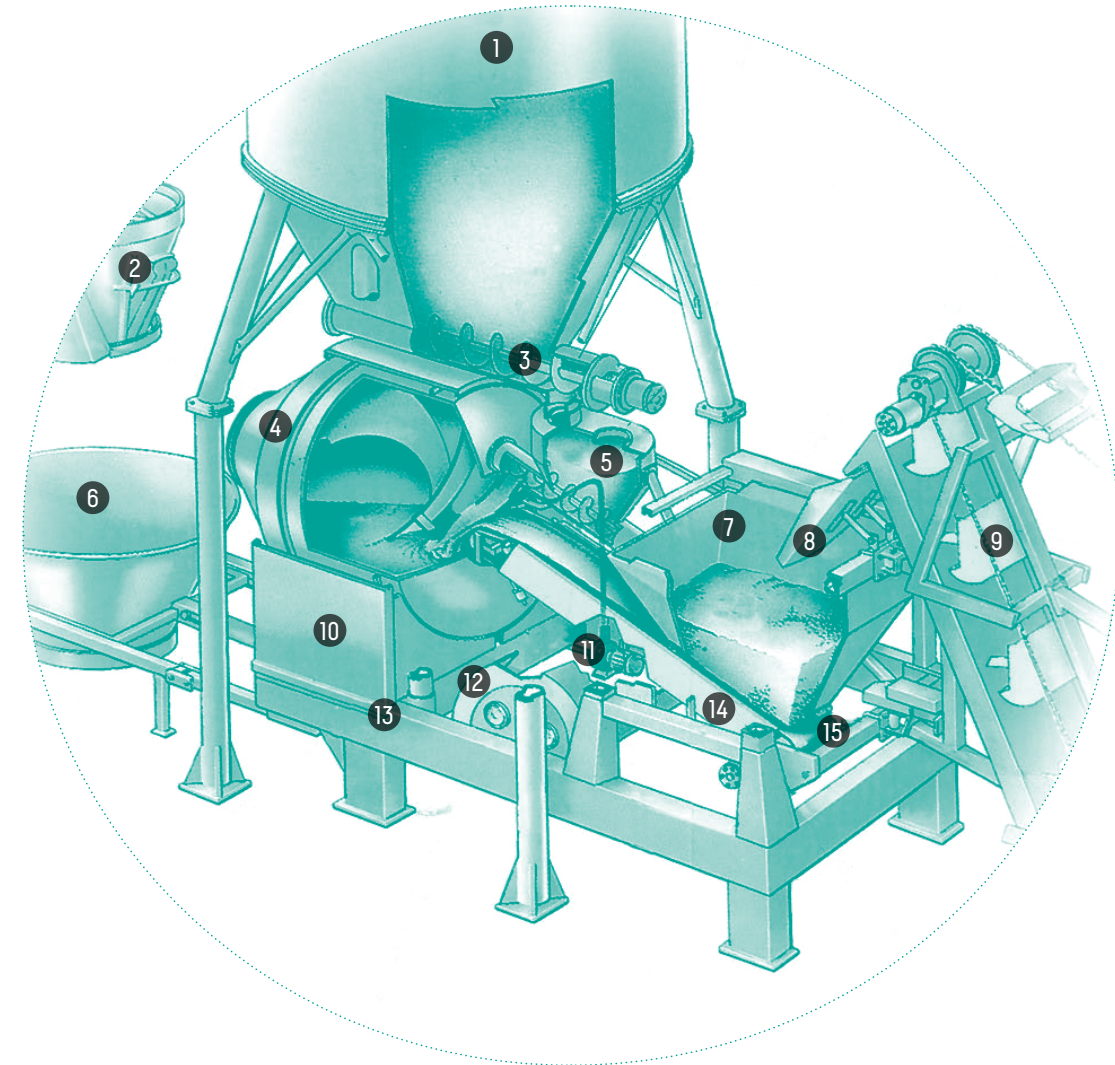
		BTK 1008
Drum mixer capacity	l	1500
Output of fresh concrete per batch	l	1250
Output of compacted concrete per batch	l	1000
Maximum aggregate stockpile	m ³	300
Maximum absorbed power	kW	TN 17.5-TR 18.5
Pedestal weight	kg	1800

ACCESSORIES

- BUCKET FOR TRANSLATING BASKET
- AGGREGATE HUMIDITY PROBE
- TIMED ADDITIVE SYSTEM

LAYOUT

BTK 1008



1_CEMENT SILO

2_SKIP

3_SCREW FEEDER

4_DRUM MIXER

5_CEMENT HOPPER WITH INCORPORATED SCREW FEEDER

6_TRANSLATING SKIP GUIDE

7_AGGREGATE WEIGHING HOPPER

8_AGGREGATES CONVEVOR

9_RADIUS LIFT ARM

10_DRUM MIXER GUARD

11_WATER PUMP

12_HYDRAULIC UNIT

13_SUPPORTING FRAME

14_CONVEYOR BELT GUARD

15_AGGREGATE CONVEYOR BELT

PRODUCTION DIAGRAMS

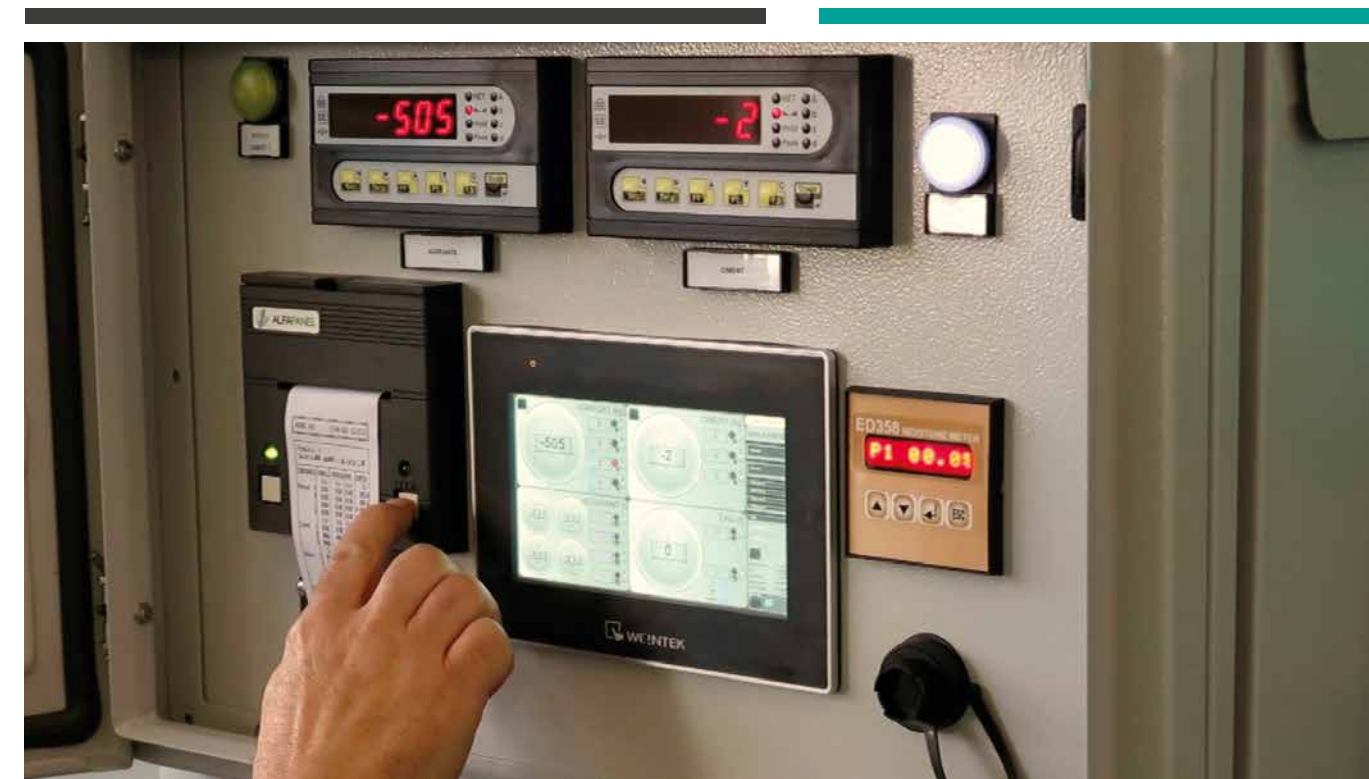
BATCHING PLANT WITH TWO WEIGHING HOPPERS

	BTK 1008-TN	BTK 1008-TR
A Cement weighing	50"	50"
B Aggregate weighing	90"	80"
C Advance water	4"	4"
D Transferring of materials	36"	36"
E Mixing and emptyings	90"	80"
Phases that define the cycle	B+C+D	B+C+D
Average time per cycle	130"	120"
Hourly output	26-28 m ³ /h	28-30 m ³ /h

A Cement weighing	A1	A2	A3	
B Aggregate weighing	B1	B2	B2	
C Advance water	C1	C2	C3	
D Transferring of materials	D1	D2		
E Mixing and emptyings	E1	E2		

Notes: A1= first cycle; A2, A3, ...= following cycles

PLUG AND PLAY SYSTEM FOR A QUICK AND SIMPLE INSTALLATION



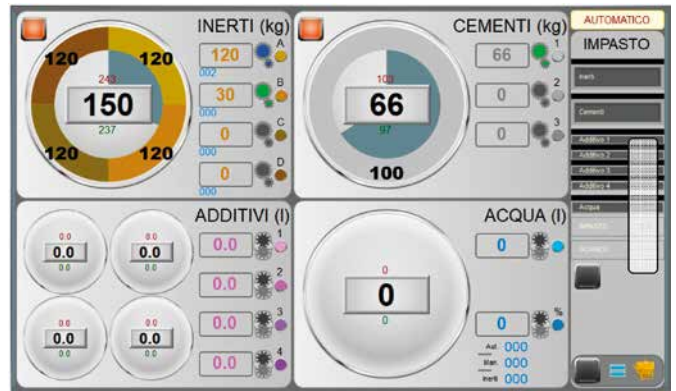
EPS 2100-BEW MULTI RECIPES MANAGEMENT UNIT

- ELECTRICAL PANEL WITH IP 54 PROTECTION LEVEL
- TRANSPARENT PROTECTIVE WINDOW FOR THE CONTROL PART
- DIGITAL DISPLAY FOR WEIGHT
- AUTOMATION BY PLC
- IMER MANAGEMENT SOFTWARE
- KEYBOARD WITH DISPLAY FOR SETTING THE RECIPES, PROCESS PARAMETERS AND FOR VIEWING CONSUMPTION
- STORAGE OF PRODUCTION DATA
- OPTION WITH PRINTER: ALLOWS PRINTING OF PRODUCTION DATA AT THE END OF THE CYCLE
- SEND MAIL OPTION: IT ALLOWS THE AUTOMATIC SENDING OF PRODUCTION DATA AT THE END OF THE CYCLE
- USB OPTION: ALLOWS THE DOWNLOAD OF STORED PRODUCTION DATA

EPS 2100-BEW MANAGEMENT AND CONTROL SYSTEMS

EPS 2100-BEW

- **Automation by PLC**
- **IMER management software**
- **Keyboard with display** for setting recipes and process parameters, for viewing consumption and storing production data
- **Option with printer:** allows production data to be printed at the end of the cycle
- **Email sending option:** allows automatic sending of production data at the end of the cycle
- **USB option:** allows the download of stored production data



RIT. START DOSAGGI			
Acqua 2	<input type="checkbox"/>	Additivo 1	0 s
Inerti	0 s	Additivo 2	0 s
Cementi	5 s	Additivo 3	0 s
Acqua	5 s	Additivo 4	0 s
Vib. bilancia		IMPASTO	10 s
		Stop nastro	27 s
Lavoro	0.2 s	Vuotamento	10 s
Pausa	0.2 s	Stop mixer	78 s
Start	0.5 s	Vuota RART	8 s

