



BTK 508





RADIUS LIFT ARM

*BTK 508 RADIUS LIFT ARM BATCHING PLANT
ONE OR TWO RADIUS LIFT ARM, ONE OR TWO CEMENT
WEIGHING SYSTEMS, 500 L. CLS PER CYCLE*

BTK 508



- COMPACT AND VERSATILE
- MAXIMUM CONCRETE QUALITY
- IDEAL FOR SMALL AND MEDIUM CONSTRUCTION SITES EVEN IN URBAN CENTERS
- LESS CO₂, TRAFFIC AND EMISSIONS
- SINGLE OPERATOR

BTK 508

BTK radius lift arm batching plant are compact, versatile and with low environmental impact, they are suitable for small and medium-sized construction sites, even located in urban center where emissions, truck handling and energy consumption must be reduced to a minimum level. Only one operator is needed to manage it.



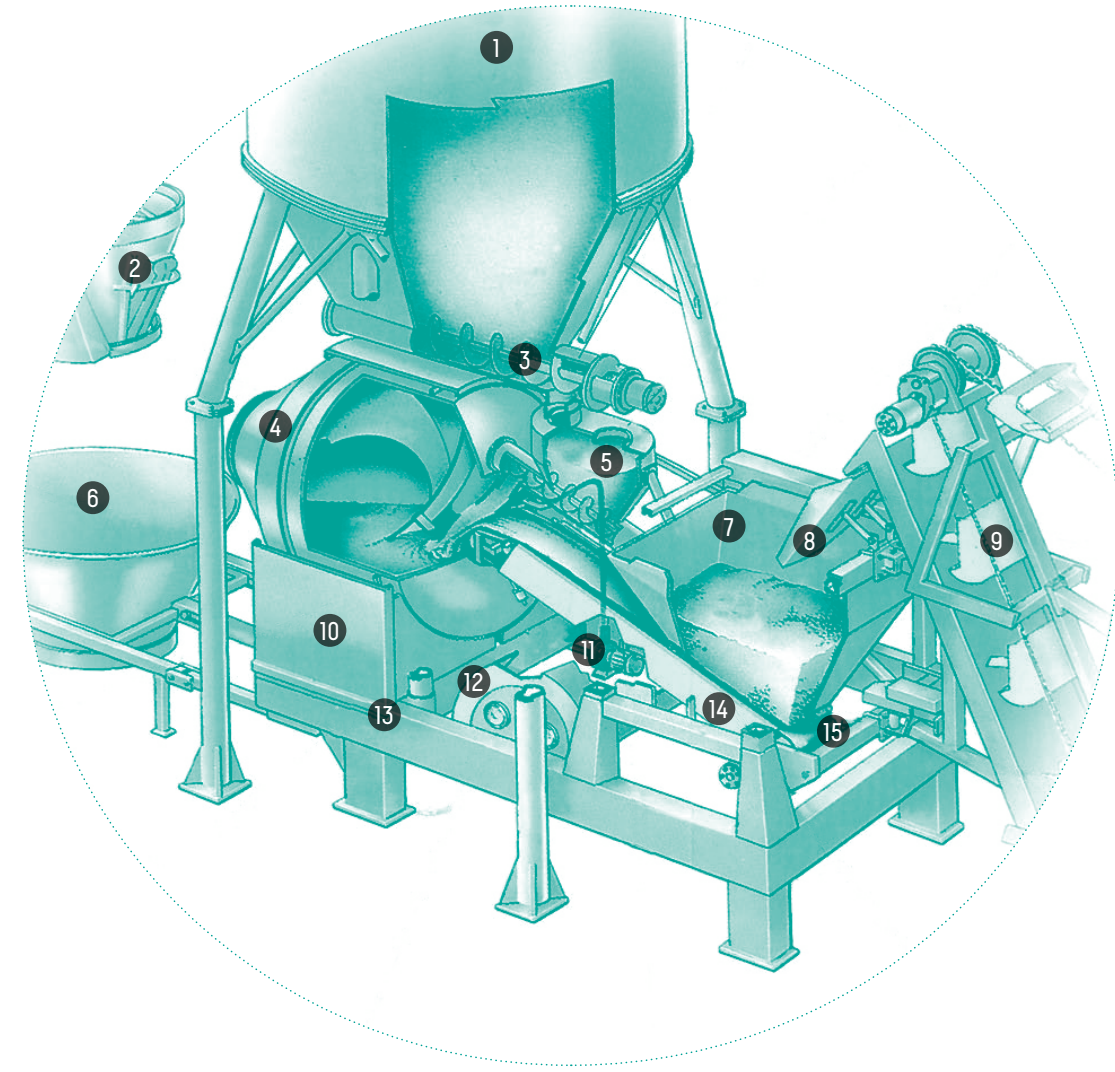
DISTINCTIVE FEATURES

- ELECTRONIC WEIGHING SYSTEM FOR CERTIFIED CONCRETE
- COMPLETELY HYDRAULIC OPERATION
- AUTOMATIC TRANSLATING BUCKET HOLDER BASKET
- SELF-COMPENSATION OF WATER
- MANAGEMENT UNIT WITH THE POSSIBILITY OF DATA TRANSMISSION AND REMOTE ASSISTANCE
- GREAT AUTONOMY THANKS TO THE GREAT STORAGE ON THE GROUND; BETTER MANAGEMENT OF SUPPLY
- MAXIMUM FLEXIBILITY: PRODUCT WHEN AND HOW MUCH YOU WANT. ZERO WASTE!



LAYOUT

BTK 508



TECHNICAL CHARACTERISTICS

		BTK 508
Drum mixer capacity	l	750
Output of fresh concrete per batch	l	625
Output of compacted concrete per batch	l	500
Maximum aggregate stockpile	m ³	300
Maximum absorbed power	kW	TN 11
Pedestal weight	kg	2500

ACCESSORIES

- BUCKET FOR TRANSLATING BASKET
- AGGREGATE HUMIDITY PROBE
- TIMED ADDITIVE SYSTEM

1_CEMENT SILO

2_SKIP

3_SCREW FEEDER

4_DRUM MIXER

5_CEMENT HOPPER WITH INCORPORATED SCREW FEEDER

6_TRANSLATING SKIP GUIDE

7_AGGREGATE WEIGHING HOPPER

8_AGGREGATES CONVEVOR

9_RADIUS LIFT ARM

10_DRUM MIXER GUARD

11_WATER PUMP

12_HYDRAULIC UNIT

13_SUPPORTING FRAME

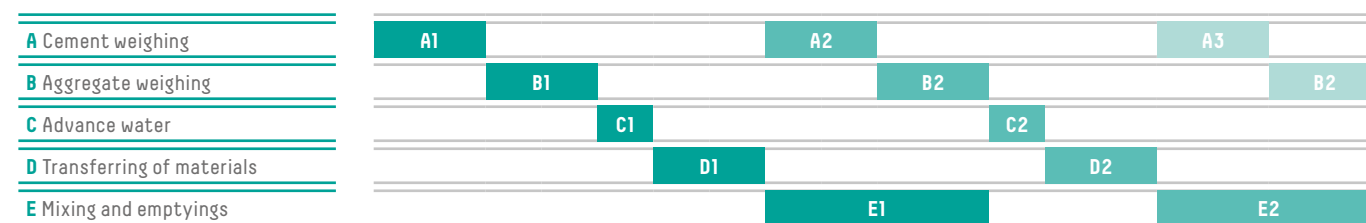
14_CONVEYOR BELT GUARD

15_AGGREGATE CONVEYOR BELT

PRODUCTION DIAGRAMS

BATCHING PLANT WITH ONE WEIGHING HOPPER

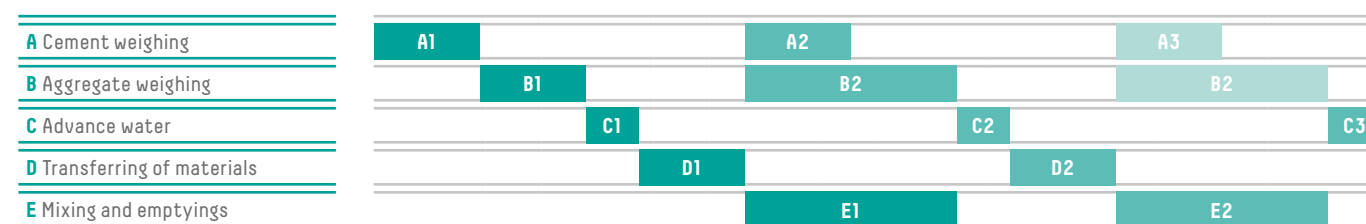
	BTK 508
A Cement weighing	20"
B Aggregate weighing	59"
C Advance water	3"
D Transferring of materials	36"
E Mixing and emptyings	79"
Phases that define the cycle	A+B+C+D
Average time per cycle	118"
Hourly output	14-16 m ³ /h



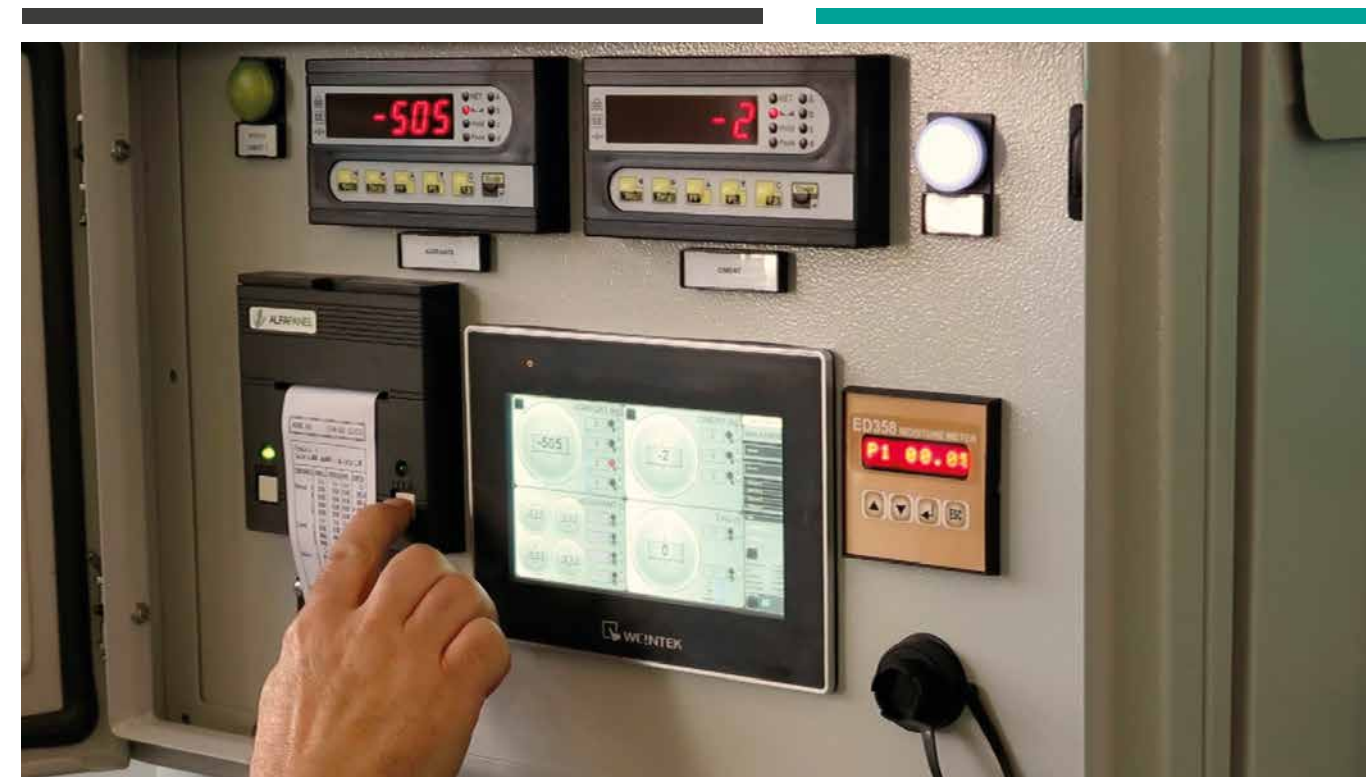
Notes: A1= first cycle; A2, A3, ...= following cycles

BATCHING PLANT WITH TWO WEIGHING HOPPERS

	BTK 508
A Cement weighing	30"
B Aggregate weighing	59"
C Advance water	3"
D Transferring of materials	36"
E Mixing and emptyings	59"
Phases that define the cycle	B+C+D
Average time per cycle	98"
Hourly output	16-18 m ³ /h



Notes: A1= first cycle; A2, A3, ...= following cycles



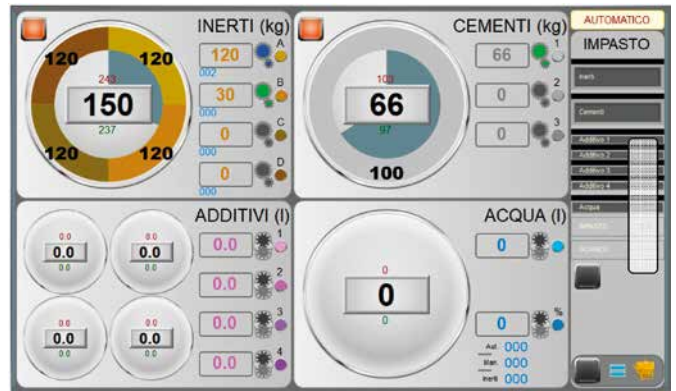
EPS 2100-BEW MULTI RECIPES MANAGEMENT UNIT

- ELECTRICAL PANEL WITH IP 54 PROTECTION LEVEL
- TRANSPARENT PROTECTIVE WINDOW FOR THE CONTROL PART
- DIGITAL DISPLAY FOR WEIGHT
- AUTOMATION BY PLC
- IMER MANAGEMENT SOFTWARE
- KEYBOARD WITH DISPLAY FOR SETTING THE RECIPES, PROCESS PARAMETERS AND FOR VIEWING CONSUMPTION
- STORAGE OF PRODUCTION DATA
- OPTION WITH PRINTER: ALLOWS PRINTING OF PRODUCTION DATA AT THE END OF THE CYCLE
- SEND MAIL OPTION: IT ALLOWS THE AUTOMATIC SENDING OF PRODUCTION DATA AT THE END OF THE CYCLE
- USB OPTION: ALLOWS THE DOWNLOAD OF STORED PRODUCTION DATA
- PLUG AND PLAY SYSTEM FOR A QUICK AND SIMPLE INSTALLATION

EPS 2100-BEW MANAGEMENT AND CONTROL SYSTEMS

EPS 2100-BEW

- **Automation by PLC**
- **IMER management software**
- **Keyboard with display** for setting recipes and process parameters, for viewing consumption and storing production data
- **Option with printer:** allows production data to be printed at the end of the cycle
- **Email sending option:** allows automatic sending of production data at the end of the cycle
- **USB option:** allows the download of stored production data



RIT. START DOSAGGI				
Acqua 2	<input type="checkbox"/>	Additivo 1	0 s	
Inerti	0 s	Additivo 2	0 s	
Cementi	5 s	Additivo 3	0 s	
Acqua	5 s	Additivo 4	0 s	
Vib. bilancia		IMPASTO	10 s	
		Stop nastro	27 s	
Lavoro	Inerti 0.2 s	Cementi 0.2 s	Vuotamento	10 s
Pausa	0.2 s	0.2 s	Stop mixer	78 s
Start	0.5 s	0.5 s	Vuota RART	8 s

