



ORUDAY 70L

ORU DAY MS 2250/1500S + ORU LOGIK L4-L5





MOBILE WET

ORU DAY MS 2250/1500S + ORU LOGIK L4-L5

ORUDAY | 70



EASIER TRANSPORTABILITY
EXTREME MOBILITY
UTMOST RELIABILITY

TUNISIA

ORU DAY 70L with LOGIK WL4 BELTUP storage unit equipped with ORU MS 2250/1500S planetary mixer. Ideal for ready-mixed concrete production for construction and structural works.



DISTINCTIVE FEATURES

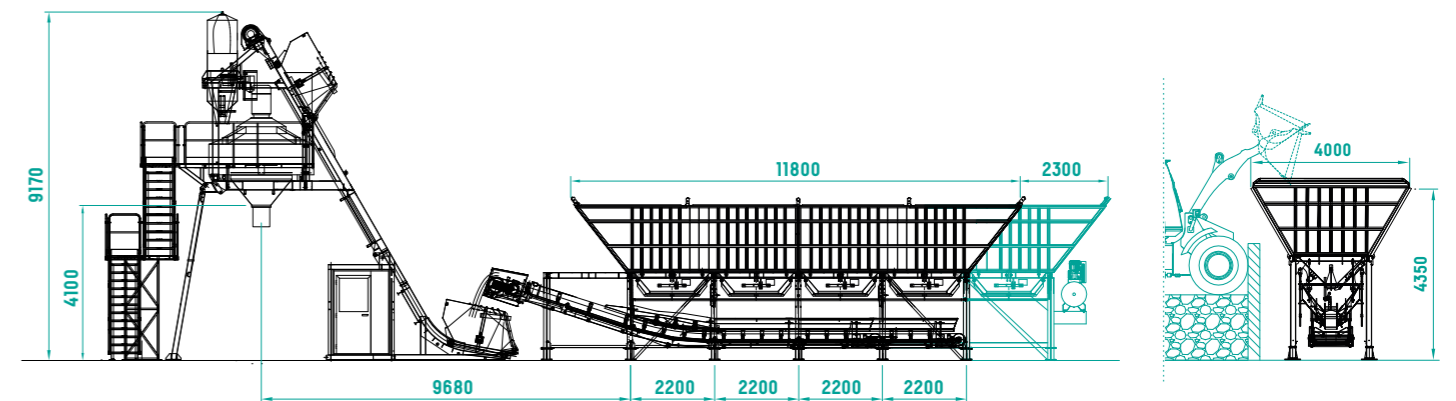
- MIXING UNIT WITH PLANETARY MIXER: PERFECT MIXING AND EXCELLENT CLEANING
- PRE-ASSEMBLED AND PRE-WIRED MONOBLOCK THAT SIGNIFICANTLY REDUCES INSTALLATION AND START UP TIME
- EXTREME MOBILITY AND TRANSPORTABILITY
- EASY INSTALLATION THANKS TO MINIMAL FOUNDATION NEEDS
- SIMPLE TO USE



ORUDAY mixing unit
with built-in skip and cabin even during transport phases

LAYOUT

ORUDAY 70L BELTUP



EASY TO TRANSPORT AND ASSEMBLE



BY ROAD
1 LOW BED TRUCK
+ 2 STANDARD TRUCKS (13,60M)

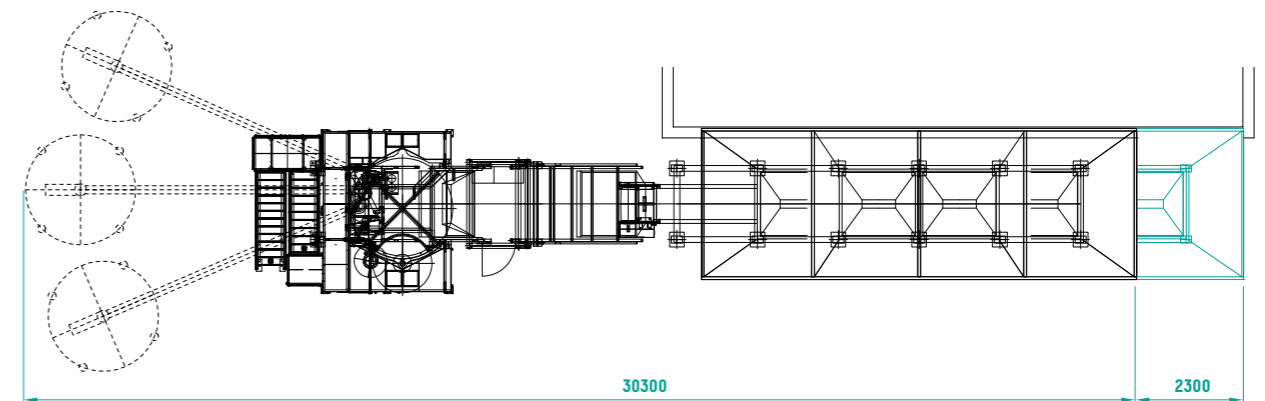


BY SEA
1X40' FR H=3250 + 1X40' OT
+ 1X40' OT H=2450

Transport valid for the standard configuration (with Logik WL4)

TECHNICAL CHARACTERISTICS - (Standard configuration)

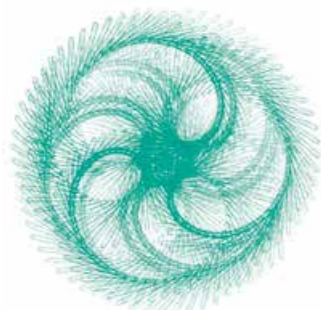
Hourly production	m ³ /h	70
Batch capacity (vibrated concrete)	m ³	1,5
Power required	kw	97
Planetary mixer	mod	ORUMS 2250/1500S
Skip (speed)	m/s	0,55
B600 cement weighing hopper	l	735
Water weighing hopper (optional)	l	600
Aggregates storage (capacity)	m ³	80+100
Weighing system (approved-Type)	mod	by load cells
Aggregates hygrometer probe (microwave) (recommended optional)	mod	PK-3
Additives system (recommended optional)	l/min	2x12
Electric compressor (recommended optional)	mod	B6000
Management unit	mod	HPS 2100V



PLANETARY PAN MIXER ORU MS 2250/1500S



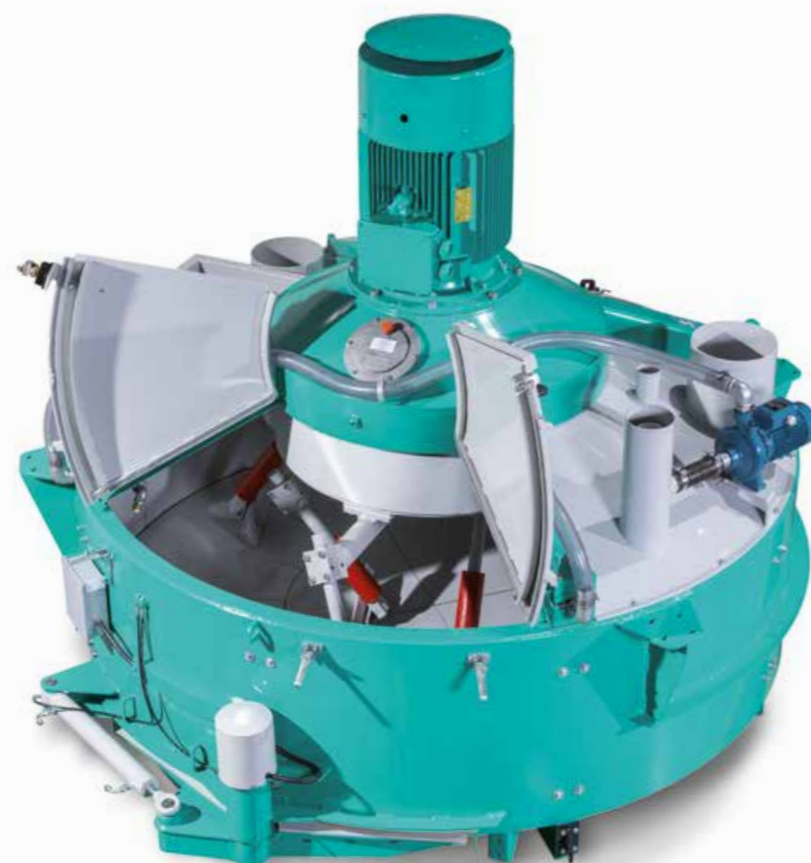
Reversible mixer blades



Planetary mixing forced regime



Oil bath planetary gear motor with hydro-dynamic joint



MIXER TECHNICAL DATA

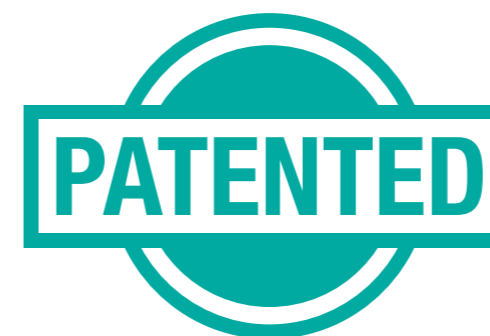
		2250/1500S
Load capacity	l	2250
Load capacity	Kg	3600
Soft yield	l	2175
Vibrated yield	l/kg	1500
Mixing and discharge time	sec.	45
Stars and blades	n.	2x2
Scraper blades	n.	1
Tangent blades	n.	1
Differential case	r.p.m.	12.4
Star	r.p.m.	42
Mixing power	kW	75
Oil hydraulic unit power	kW	3
Weight	Kg	5600

MAIN OPTIONAL ACCESSORIES

- 600÷650 HB WEAR-PROOF STEEL INTERNAL LININGS
- 600÷650 HB WEAR-PROOF STEEL BLADES
- AUTOMATIC HIGH PRESSURE CLEANING SYSTEM
- CONFIGURATIONS FOR EXTREME WEATHER CONDITIONS



LOGIK WL4 BELTUP storage unit



ORU LOGIK L AGGREGATE STORAGE UNITS

- MODULAR AND VERSATILE
- HEAT GALVANISED BINS AND FRAME
- HIGH STORAGE CAPACITY
- HIGH INCLINATION LONGITUDINAL PANELS
- DISCHARGE CONES AND AGGREGATE SCALE BINS LINED WITH INTERCHANGEABLE WEARING ELEMENTS

BELTUP WEIGHING BELT

- NO CONCRETE PILLARS AND/OR SKIP PIT
- LOW AGGREGATE LOADING POINT WITHOUT REDUCING CAPACITY
- HORIZONTAL AGGREGATE WEIGHING SYSTEM AND MAXIMUM CAPACITY

BELTUP WEIGHING BELTS

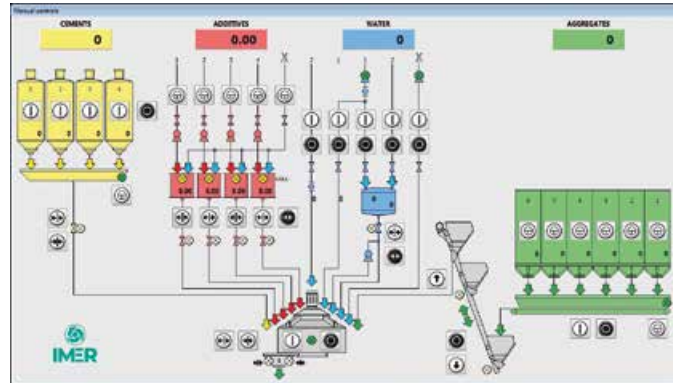
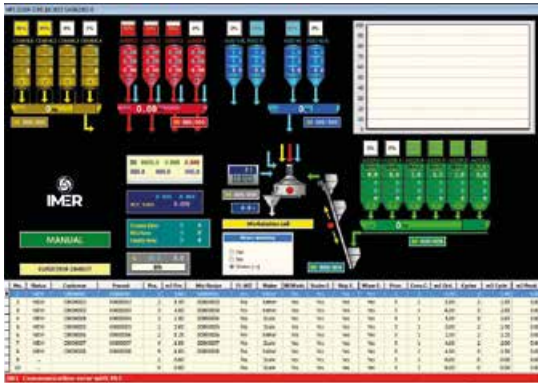
L4	
Width (m)	0.80
Flow (m ³ /h)	266
Length (m)	12.30
L5	
Width (m)	0.80
Flow (m ³ /h)	266
Length (m)	14.50

HPS 2100-V MANAGEMENT AND CONTROL SYSTEMS

HPS 2100-V

Is a customised and automated software solution for the most advanced concrete pre-packaging processes. Thanks to its user-friendly interface, the system is extremely simple to use. HPS 2100-V is the result of synergies between experience, technology and flexibility, all offered at the customer's disposition.

The basic hardware configuration includes a personal computer with an LCD monitor as well as the peripheral devices needed to store and enter data. Microsoft Windows operating system is used, available in different languages. Real-time operation is ensured by the PLC.



Le Officine Riunite - Udine S.p.A. | Concrete Division
Via Santa Caterina, 35
33030 Basaldella di Campoformido (Udine) - Italy
Tel. +39 0432 563911 - Fax +39 0432 562131
oru@oru.it | imergroup.com

Le Officine Riunite Udine S.p.A. reserve the right to change the information contained herein without prior notice when they consider it justified. The data and dimensions are therefore not to be considered as binding. The illustrations may include accessories and therefore they could be slightly different from the standard versions of the equipment.